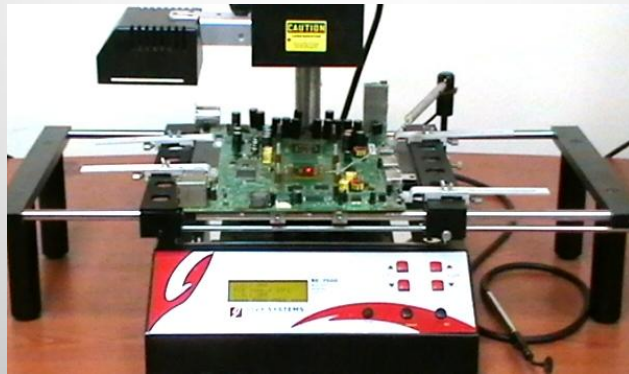


# Setup recommendation

**For X-Box 360 on  
RE -7500 Rework System**

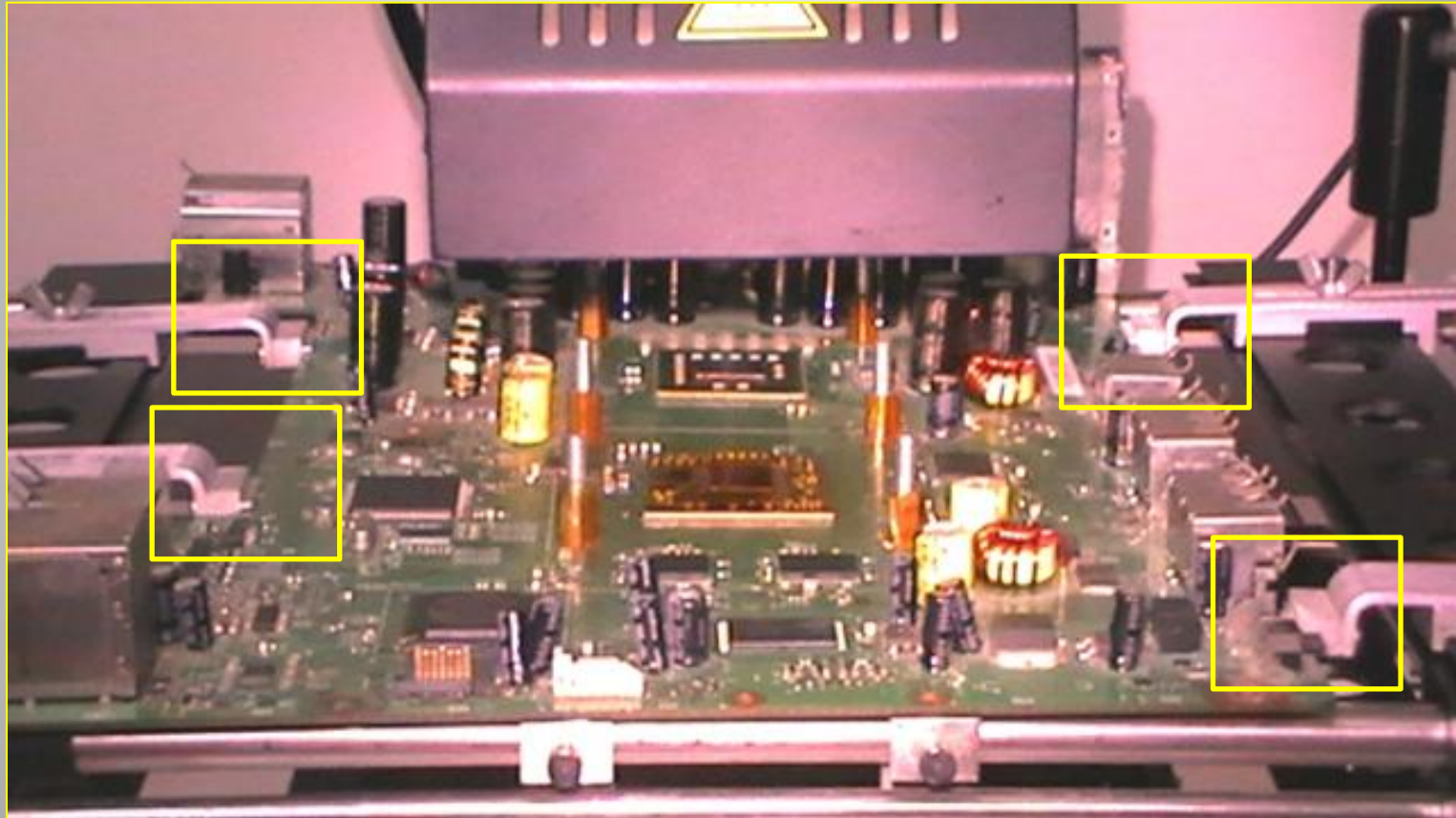


**Before**



**After**

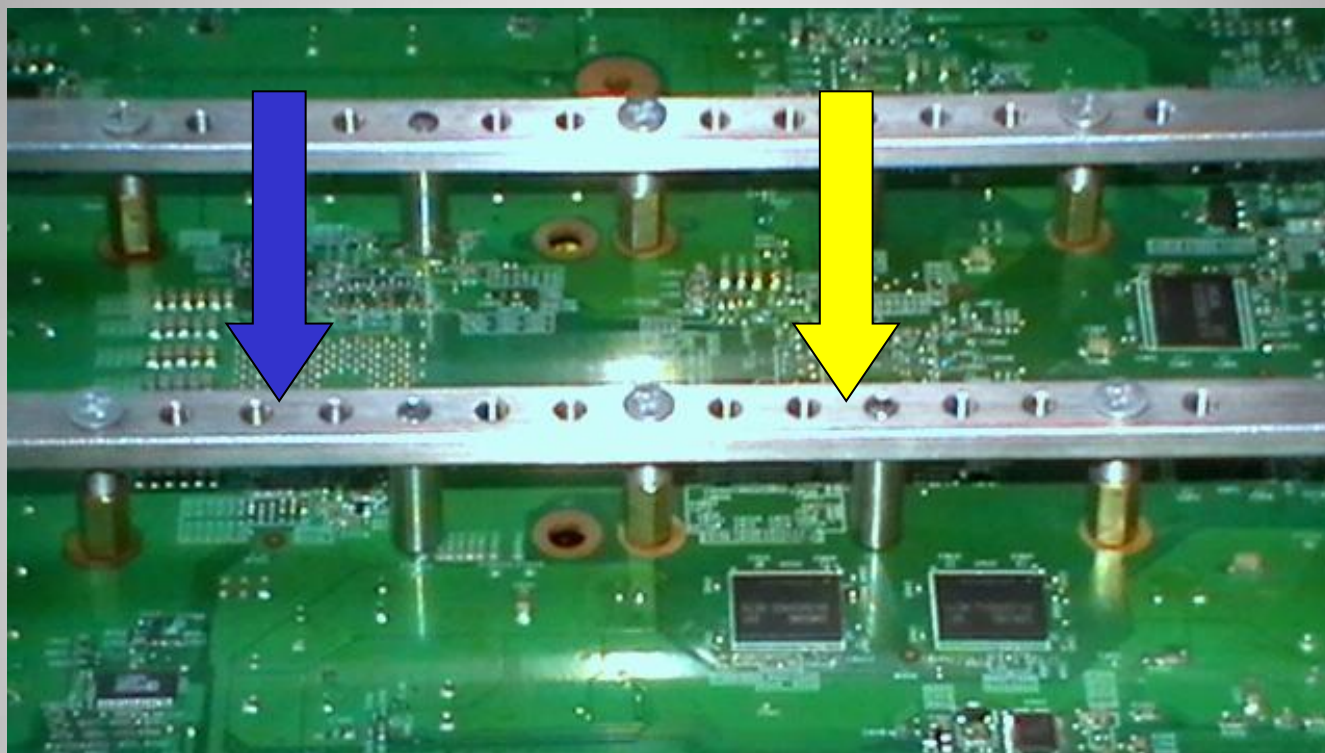
## Fixing of the X-Box 360 board



### Please note:

There are many supporters available in the market , which is not compatible with the RE7500 design .

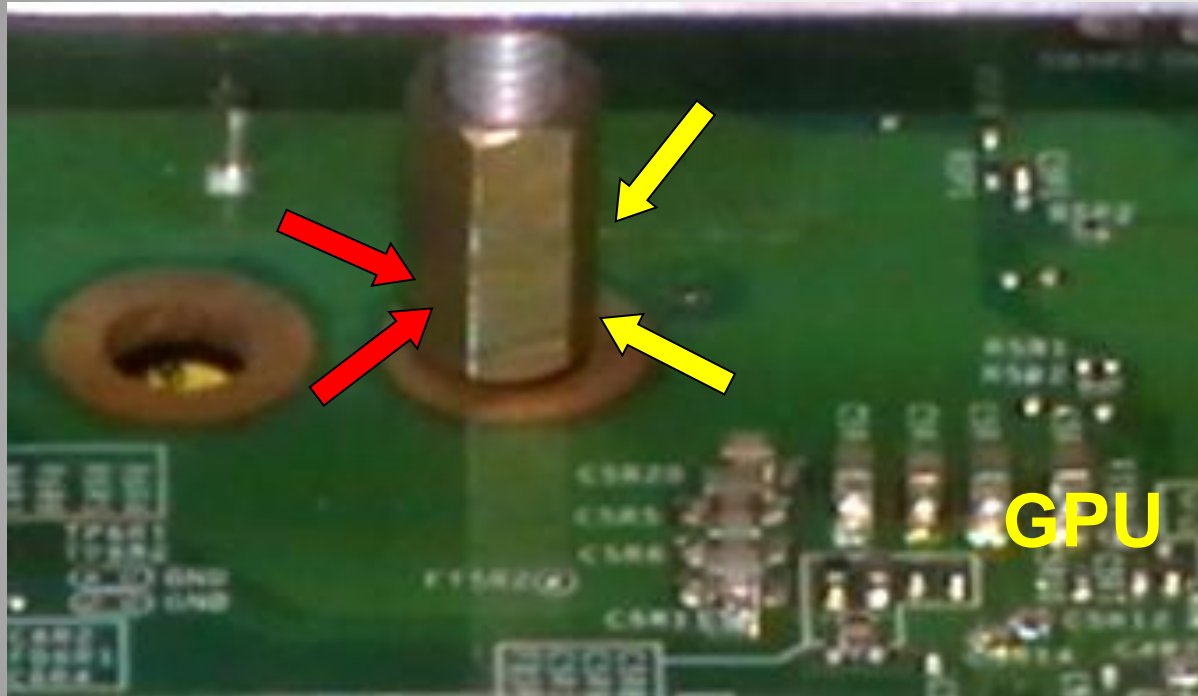
## Fixing of the X-Box 360 board



Use one JV-LSU with two modified screw pins at the GPU Clamp holes and one regular pin (yellow arrow signing the GPU location) on the right side. Extra one Screw modified pin at the left clamp holes for the CPU (Blue Arrow signing the CPU) .

Another JV-LSU on the left side of the GPU & GPU in same pins sequences.

## Fixing of the X-Box 360 board



Four pins are located around the GPU.

These pins **MUST** have some **OFFSET** to the holes around the GPU!

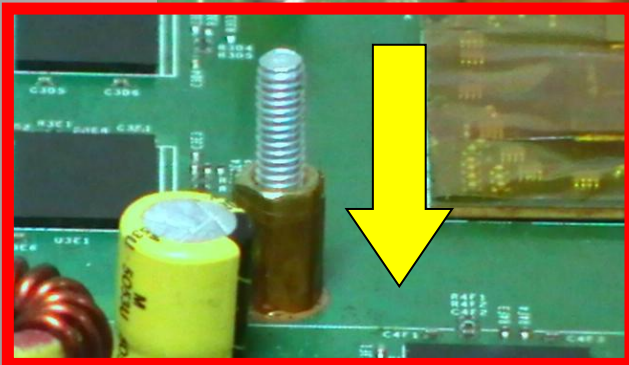
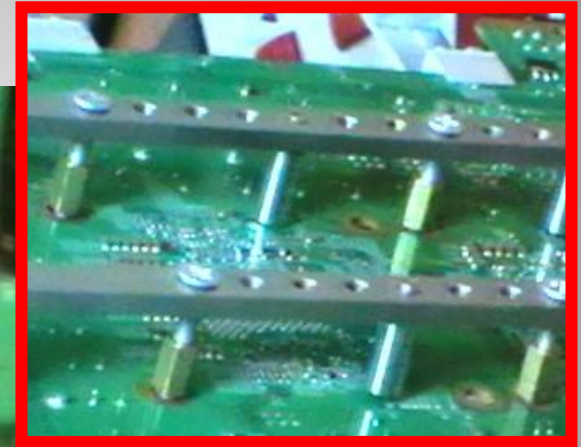
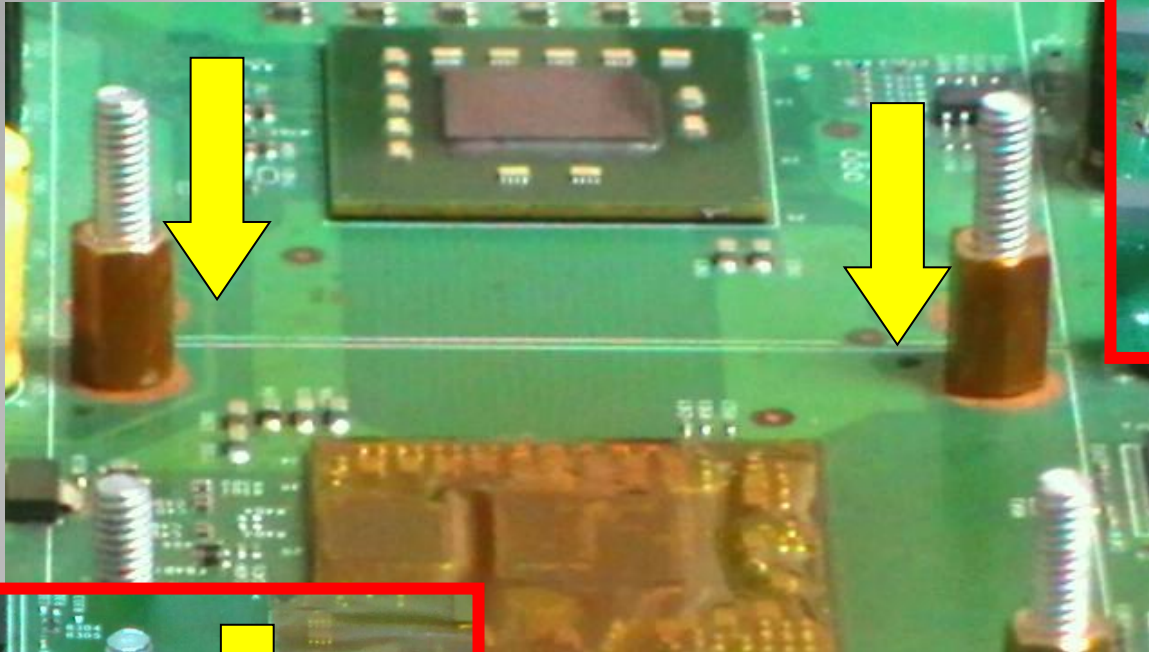
If a pin is located centered under the hole then it could slip into the hole because the pin diameter is smaller than the hole.

(yellow arrow) Shows the migrate space.

(red arrow) shows the limit in pin migration.



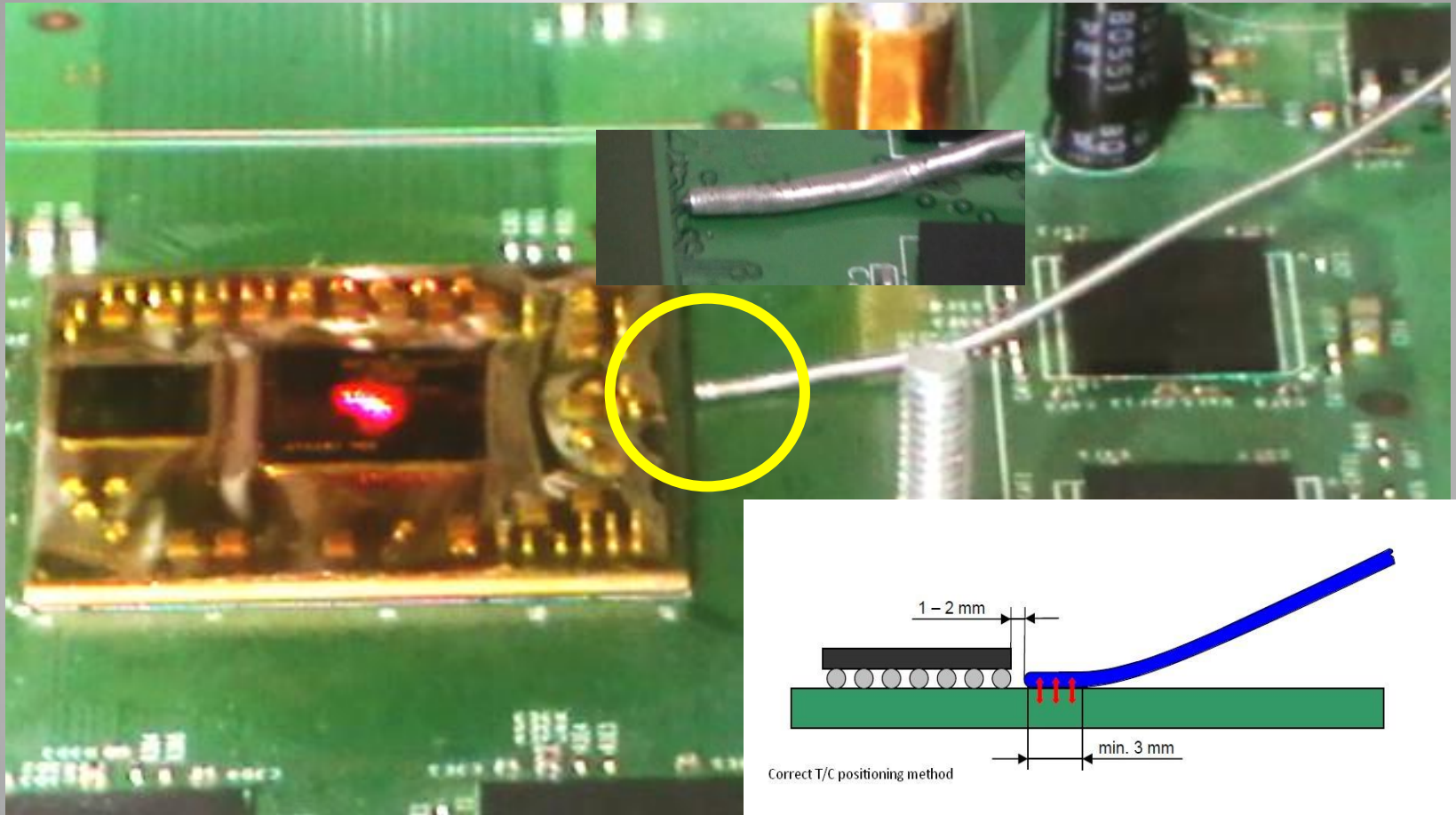
## Fixing of the X-Box 360 board



**Coupling nut  
stressing without  
tension to PCB. Soft  
tighten fixing with two  
Coupling nuts  
diagonally around  
GPU.**

**Offset of supporter  
pins to the hole AWAY  
from GPU. This allows  
board extension while  
heating process.**

## TC setup at X-Box 360 board



Be sure to have the TC in the right position beside the GPU! Correct position of thermocouple is very important. TC tip should be placed flat on the PCB surface. Tip **MUST** touch the surface! Otherwise it shows a wrong temperature.

# Profile setup for X-Box 360

RE-7500 Profile Editor

### RE-7500 Profile Characteristic curve

□ T/C Reading: C    ■ User Graph

Time (Sec)	Temperature (C)
0	0
30	60
60	110
90	160
120	190
135	205
150	190
180	150
210	110
240	80
270	50
300	20

Temperature (C)

Time (Sec)

Preheat Phase

X1 Temperature Setpoint: 100 C

X1 Message: UH to 3

Lower Heater State: FAST REFL

Upper Heater State: REFLOW

FAN Normal Mode

Soak Phase

X2 Temperature Setpoint: 185 C

X2 Message: UH in 3

Lower Heater State: REFLOW

Upper Heater State: FAST REFL

FAN Normal Mode

Reflow Phase

X3 Temperature Setpoint: 205 C

X3 Message: TAL...

Lower Heater State: PERHEAT

Upper Heater State: REFLOW

FAN Normal Mode

General Parameters

Profile Name: XBOXGPURF    File Name: C:\Program Files\JOVY Systems\F

Save Graph    FAN ON/OFF

Profiles on Computer

New    Open    Save

Profiles on RE-7500

Retrieve    Save    Profile 1    Profile 2    Profile 3    Run    Exit Profiles

## Important hints for rework process

- ❖ Baking of the PCB is a necessary up to 100°C , PCB with moisture causing pop-corn and tombstone effects, while reworking .
- ❖ Correct position of thermocouple is very important. TC tip should be placed flat on the PCB surface. Tip MUST touch the surface! Otherwise it shows a wrong temperature .
- ❖ Coupling Nuts should NOT be tightened with too much force. The board just shouldn't be able to move anymore. (Offset space)
- ❖ Starting temperature value for the profile is 65 °C to 70°C.
- ❖ Using of 2 units of JV-LSU and 4 units of JV-SSU is a must for preventing warp to a minimum accepted rate.