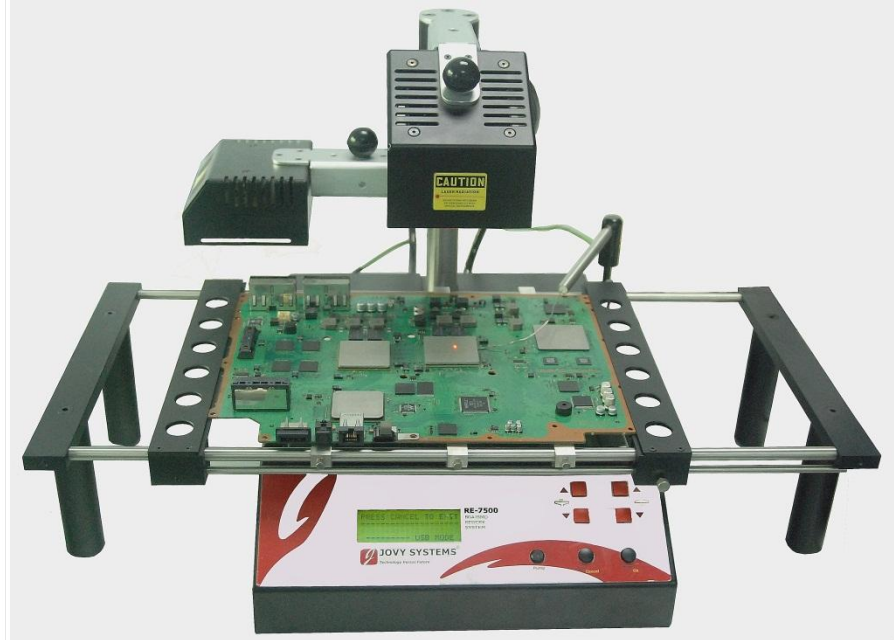


Setup recommendation For PlayStation -3

RSOD
Red Screen of
death

Ocorreu um erro grave. Contacte o apoio técnico para assistência.
Произошла неустранимая ошибка. Обратитесь в центр технической поддержки.
Vakava virhe on tapahtunut. Ota yhteyttä tekniseen tukeen.
A serious error has occurred. Contact technical support for assistance.
予期せぬエラーが発生しました。インフォメーションセンターへお問い合わせください。
심각한 오류가 발생했습니다. 인포메이션 센터로 문의해 주십시오.
發生未預期錯誤。請聯絡PS3™消費者服務中心，以取得必要協助。
发生了严重的错误。请拨打服务热线寻求技术支持。



YLOD
Yellow led of
death

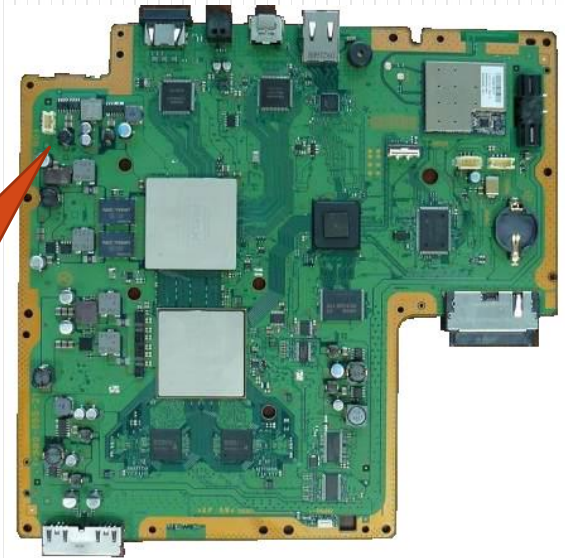


Fixing of the PlayStation 3 PCB



Large
Motherboard

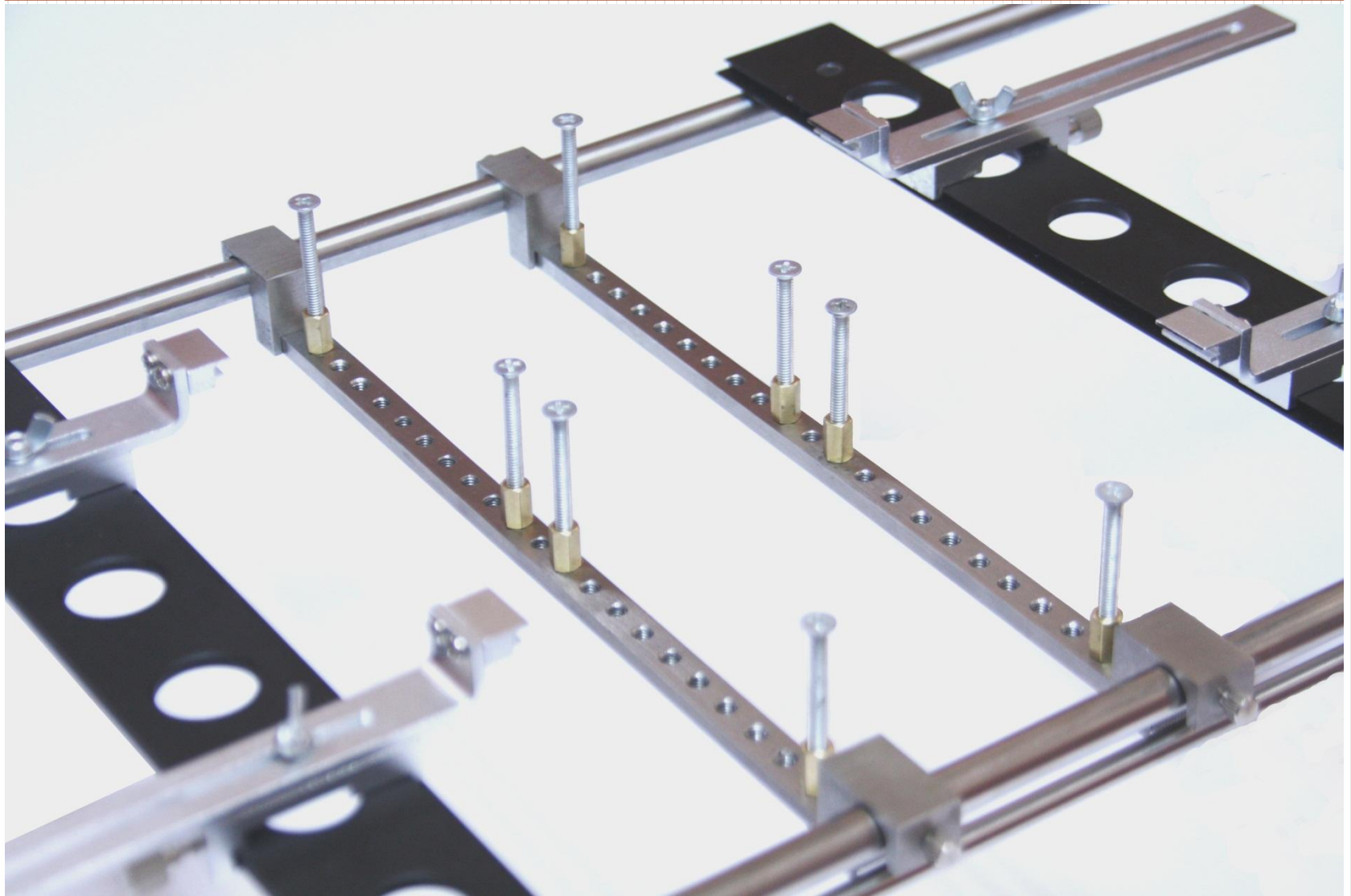
Slim
Motherboard



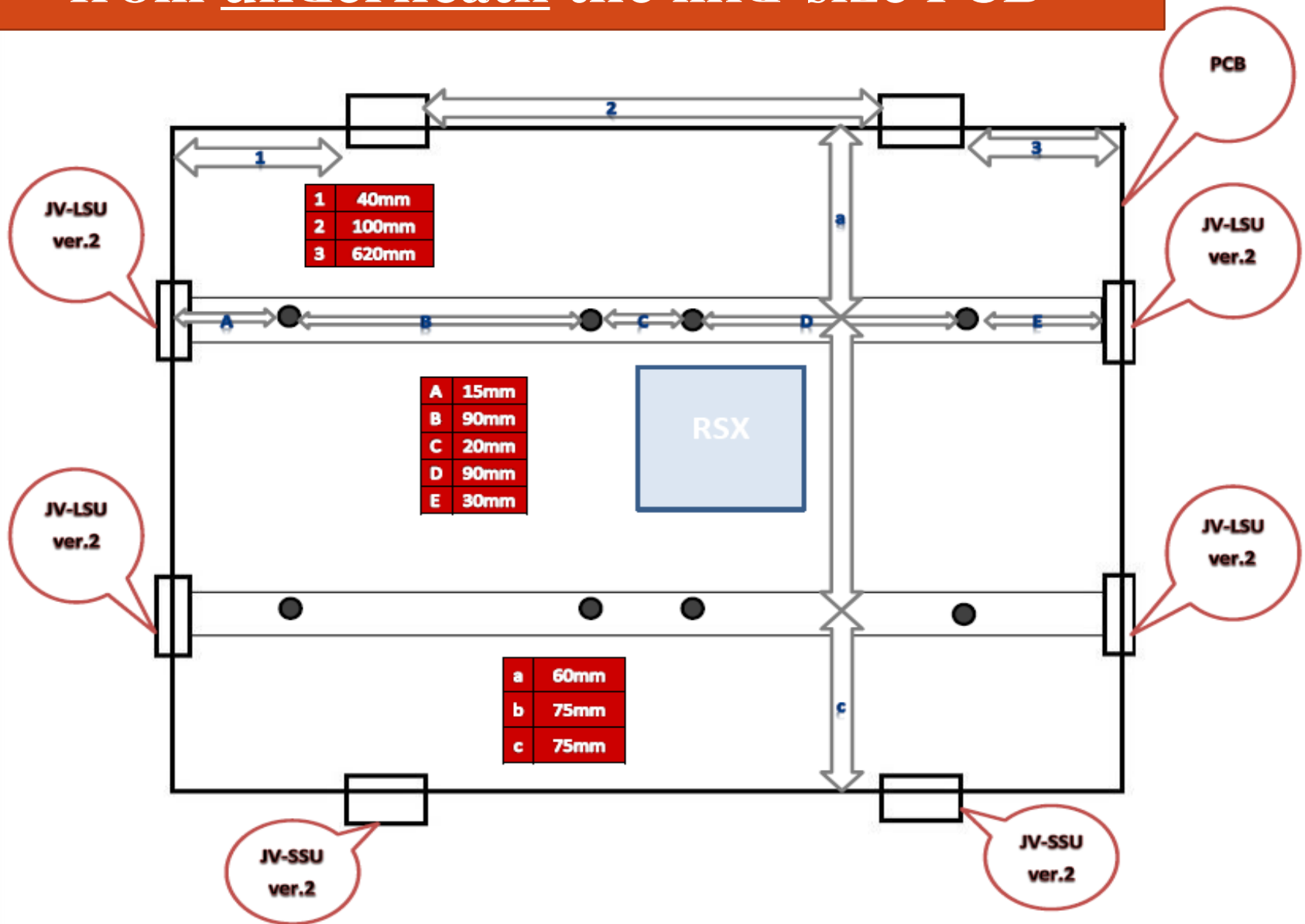
Mid-Size
Motherboard



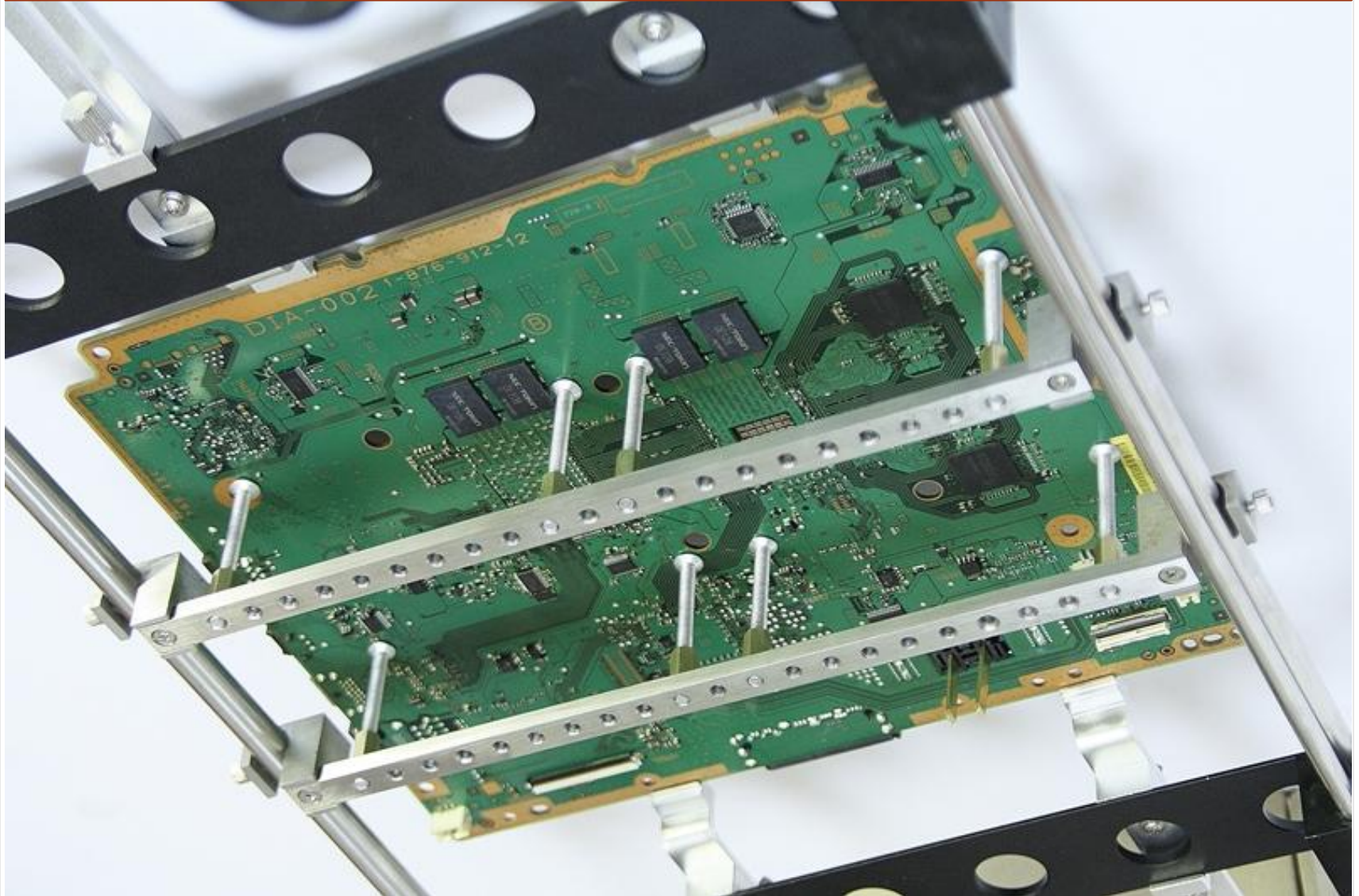
Supporters installation with the X/Y table for mid-size motherboard



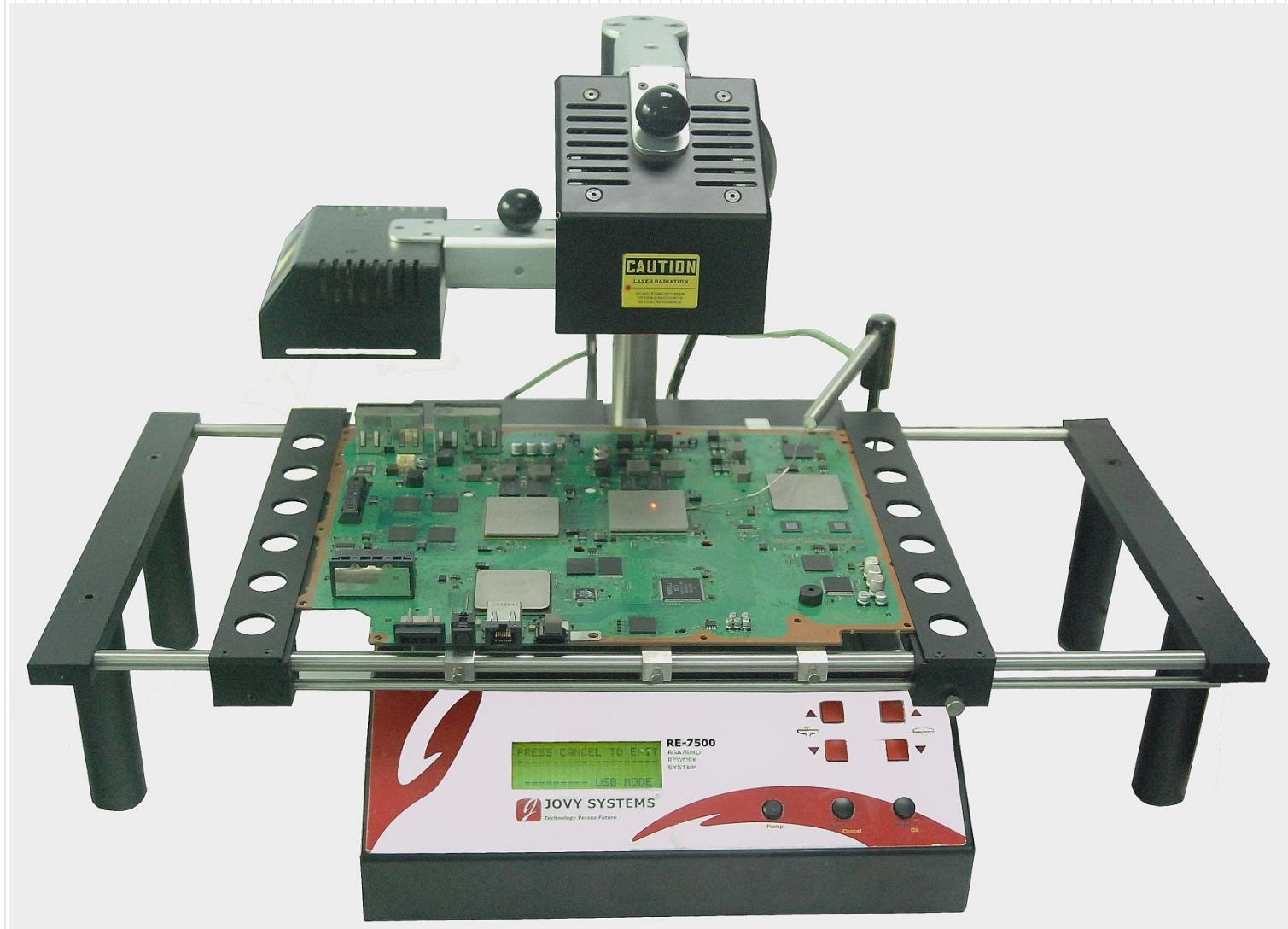
Approximate dimensions for supporters from underneath the mid-size PCB



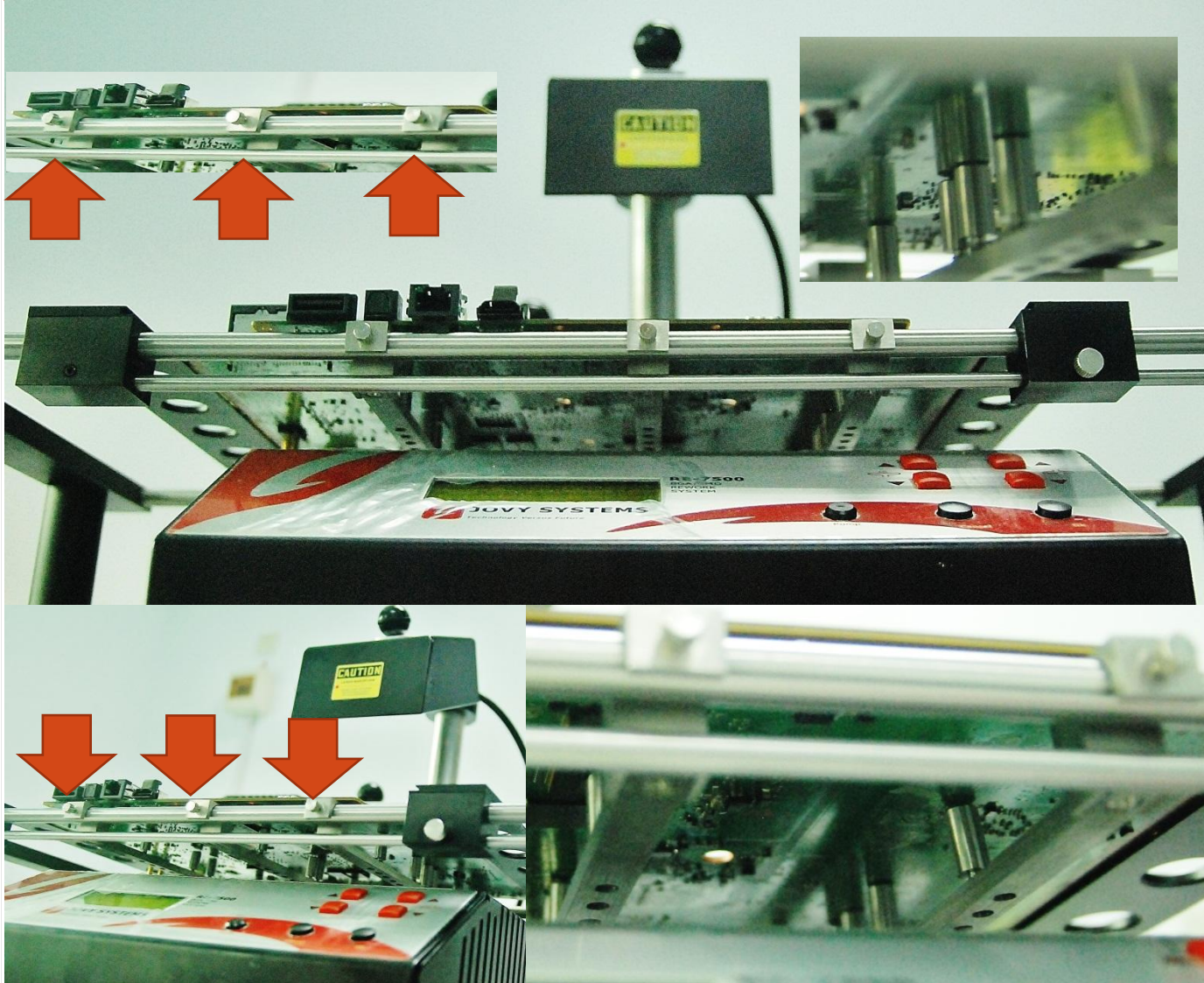
PlayStation 3 PCB installation with the X/Y table and supporters



PlayStation 3 large PCB installation with the X/Y and 3 of JV- LSU large supporters only

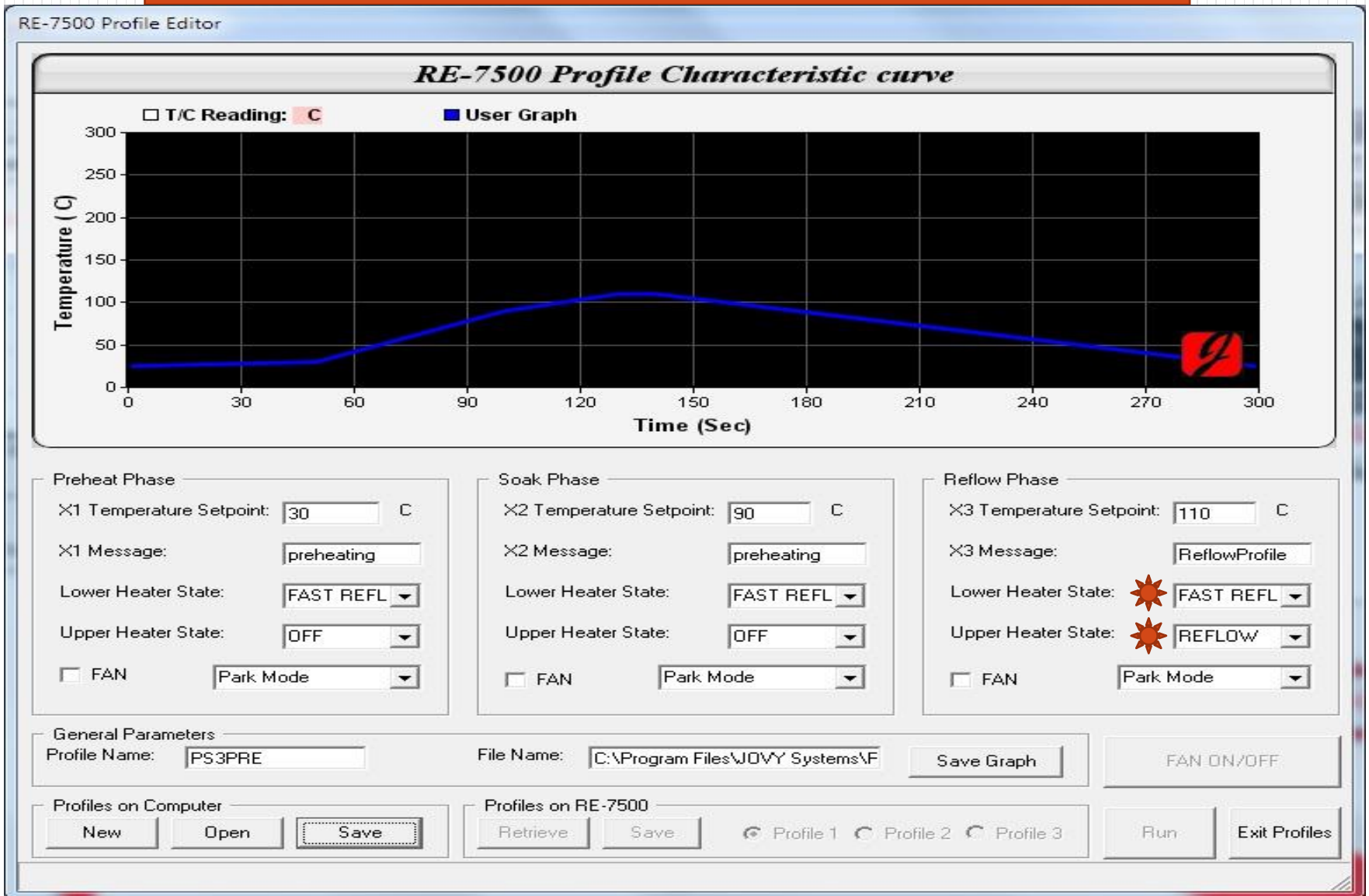


PlayStation 3 large PCB installation with the X/Y and 3 of JV- LSU large supporters only



Only 3 units of JV-LSU covers the Large PCB space (as shown)

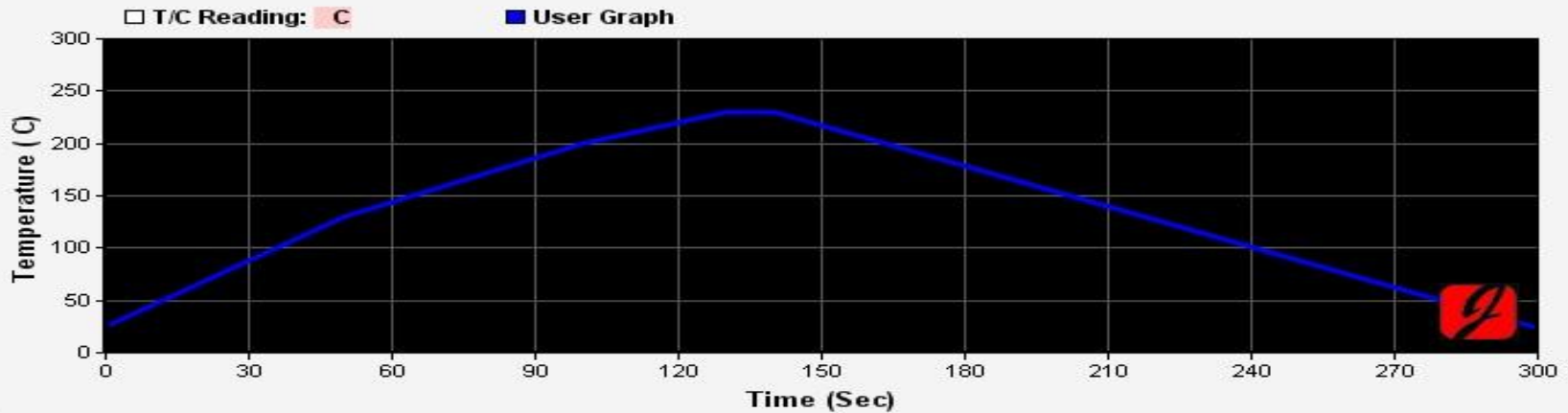
PS3 – Preheating Profile



PS3 – Reflow Profile

RE-7500 Profile Editor

RE-7500 Profile Characteristic curve



Preheat Phase

X1 Temperature Setpoint: C

X1 Message:

Lower Heater State:

Upper Heater State:

FAN

Soak Phase

X2 Temperature Setpoint: C

X2 Message:

Lower Heater State:

Upper Heater State:

FAN

Reflow Phase

X3 Temperature Setpoint: C

X3 Message:

Lower Heater State:

Upper Heater State:

FAN

General Parameters

Profile Name:

File Name:

Profiles on Computer

Profiles on RE-7500

Profile 1

Profile 2

Profile 3

Important hints for rework process

- ❖ Chose the suitable PCB installation method according to the PS3 Motherboard.
- ❖ Upper heater in level 3 for all PS3 Motherboard types.
- ❖ Run the rework profile immediately after the Preheating profile ends.
- ❖ Do not remove the heat think covered the IC at any of the rework stages.
- ❖ Correct position of thermocouple is very important. TC tip should be placed flat on the PCB surface, and must touch the surface; otherwise it indicates wrong temperature value.