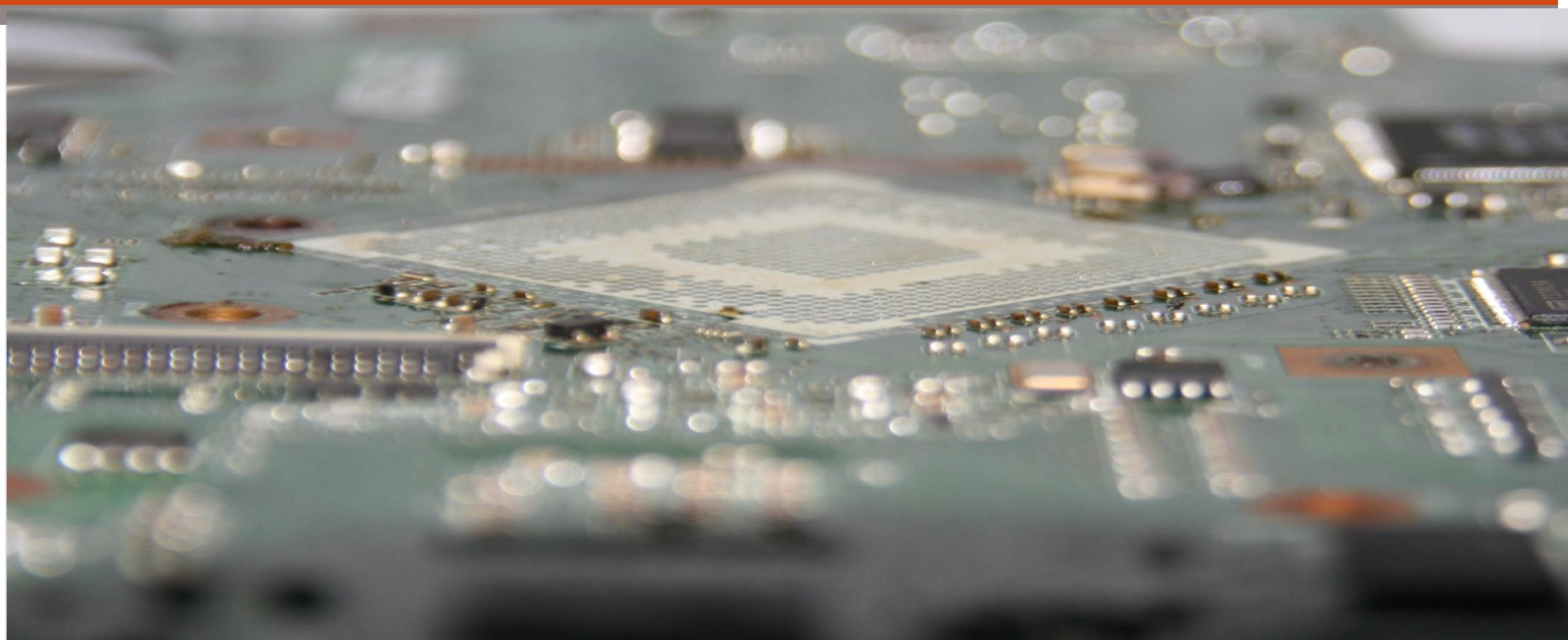




ASUS F5VL Set up Guide for RE-7500





Introduction

- ASUS lately launched the sensitive PCB of F5VL which is easy to get warped even the temperature under the melting point.
- Rework any component on this type of PCB is considered one of the most challenges, as the melting point of the soldering material is 225 to 230 while the PCB could be damaged only if the temperature above 180.
- For this, JOVY designed a special fixture to protect the PCB during any stage of reflow or rework.

Recommended tools to be used



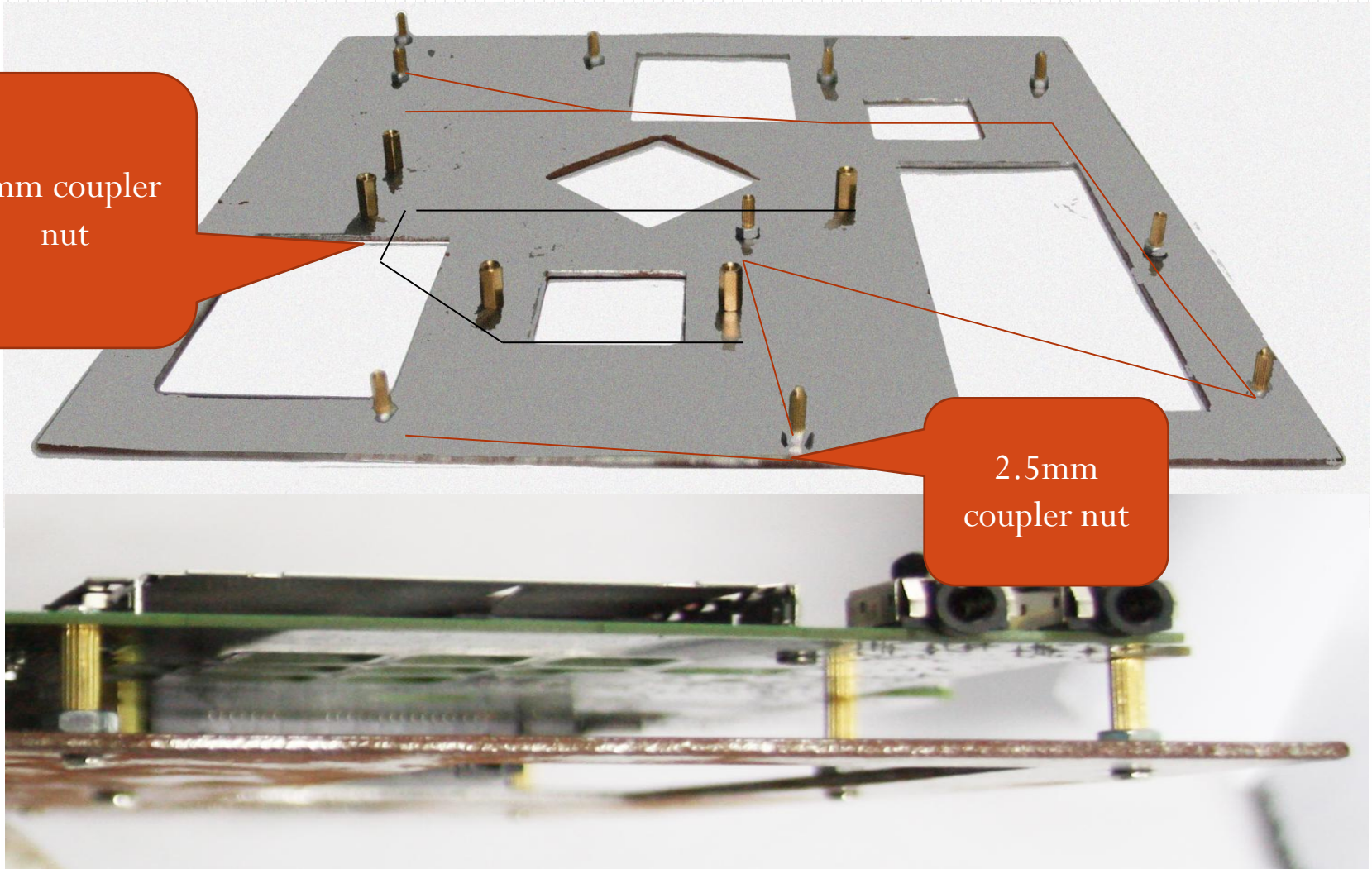
- RE-7500
- Special JOVY fixture for Asus F5 PCB
- 1 unit of JV-LSU
- Flux JV-FL010/030
- ASUS F5 VL PROFILE

Fixture Layout Drawings



3mm coupler
nut

2.5mm
coupler
nut

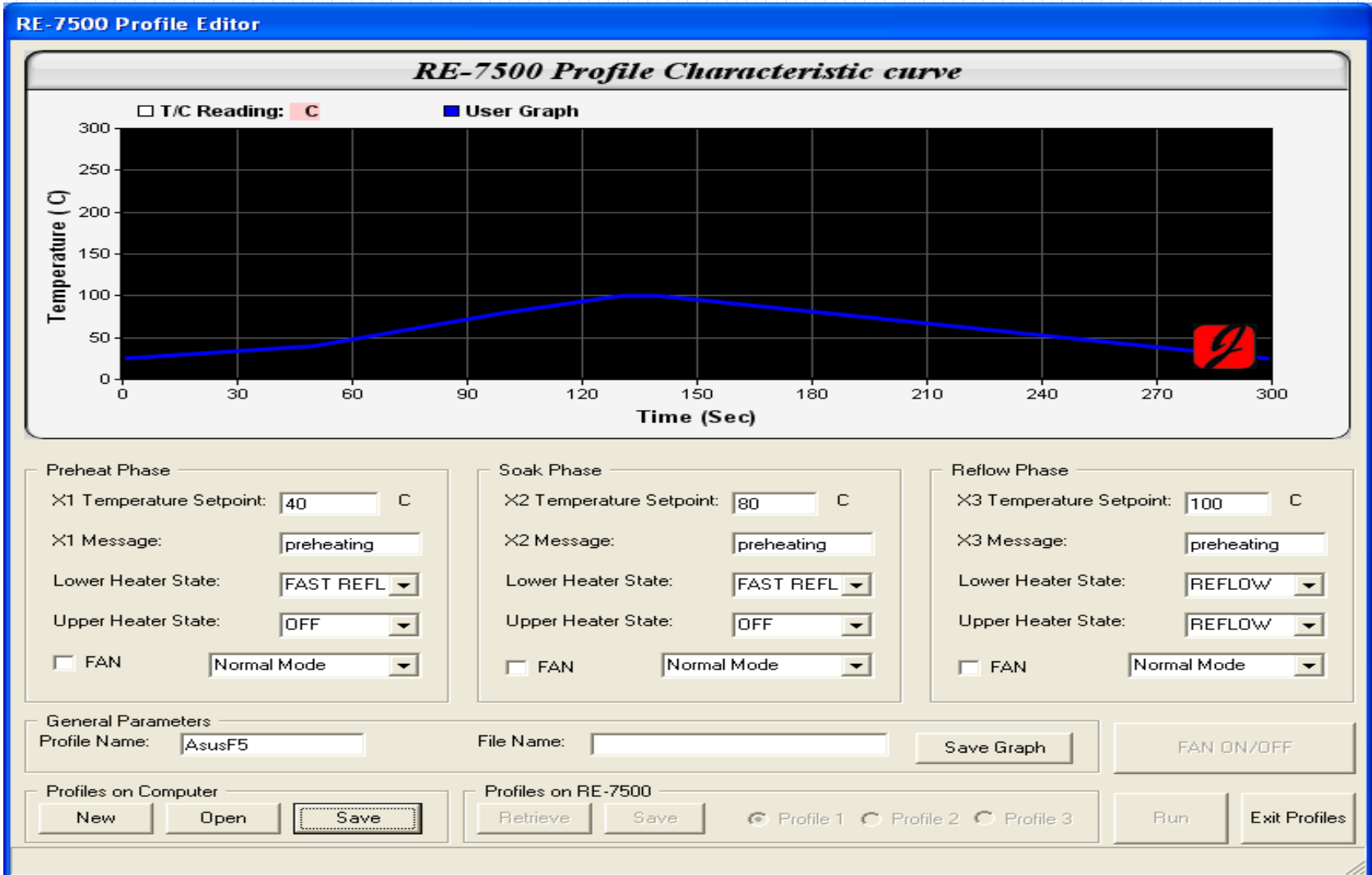




The fixture designed to rework both of the PCB sides

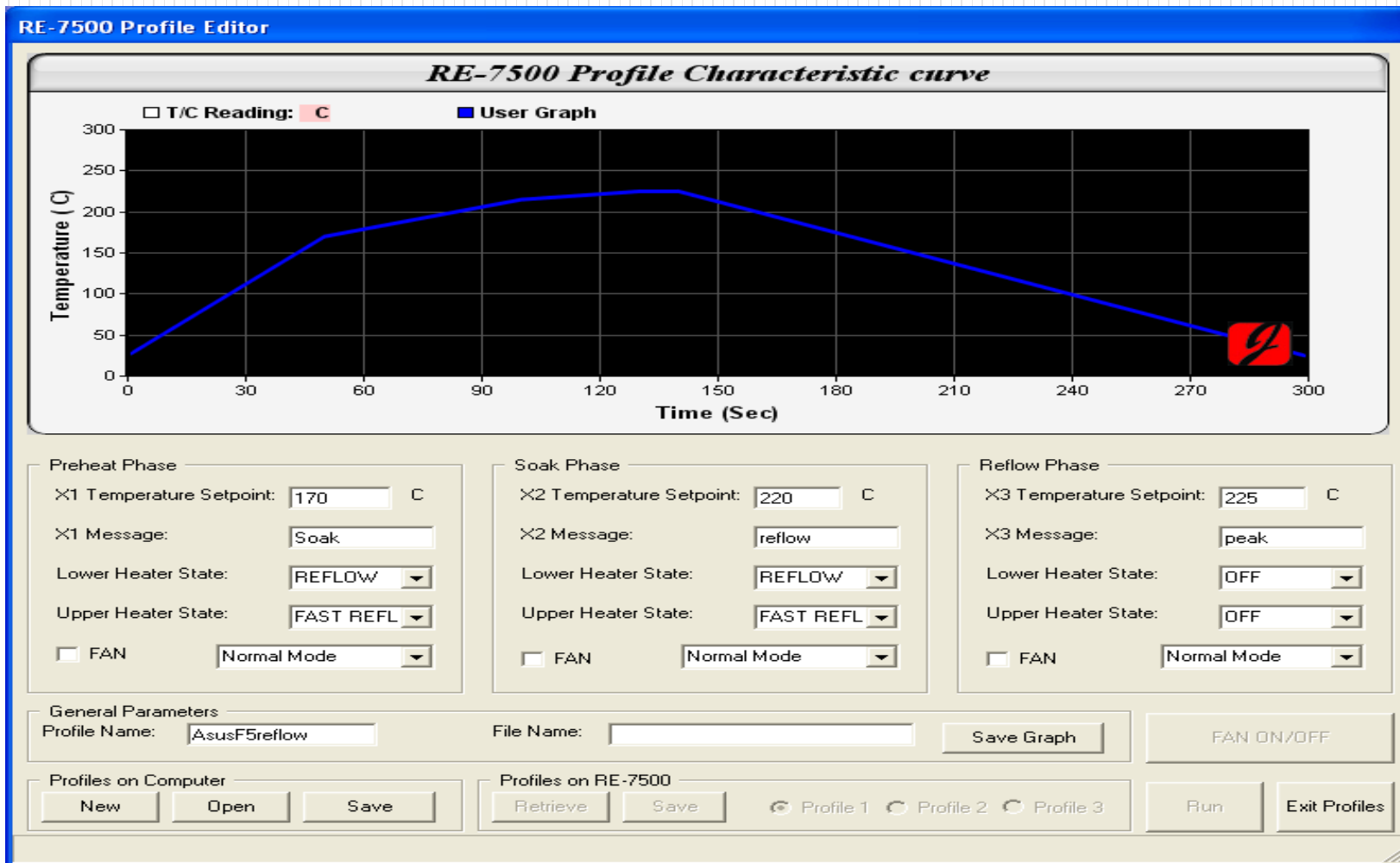


Preheating Profile





Reflow Profile for soldering, reflow and De-soldering.





Process summary video